

NONPROFIT
U.S. POSTAGE
PAID
PERMIT # 1608
BALTIMORE, MD

JOHNS HOPKINS
M E D I C I N E
A Woman's Journey
720 Rutland Ave.
Turner 001
Baltimore, MD 21205

JOHNS HOPKINS MEDICINE
A Woman's Journey
Friday, May 17, 2024
9-11:45 a.m.
register today!
Visit hopkinsmedicine.org/awomansjourney/gwa
call 410-955-8660 or email awomansjourney@jhmi.edu

AWJ2306037

Dear Friends,

Johns Hopkins Medicine, including Sibley Memorial and Suburban hospitals and Johns Hopkins Community Physicians, invites you to learn about advances in medicine directly from the physicians who are conducting research and putting discoveries into practice. Join us for A Woman's Journey between 9 and 11:45 a.m., Friday, May 17, 2024, in-person at the Bethesda North Marriott Hotel and Conference Center. Enjoy a heart-healthy breakfast before the formal presentations begin at 9:45 a.m.

Each year our physicians and scientists make transformative discoveries and innovations that enhance our understanding of diseases, promote early detection, and implement new treatments. We know you will want to gain new insights from this year's speakers that will highlight three compelling subjects.

Be empowered. Seize this opportunity. Take a morning for yourself. Join us on our quest to make the most well-informed medical decisions for ourselves and those we love. This enlightening program will enrich your life and, for some, may be lifesaving.

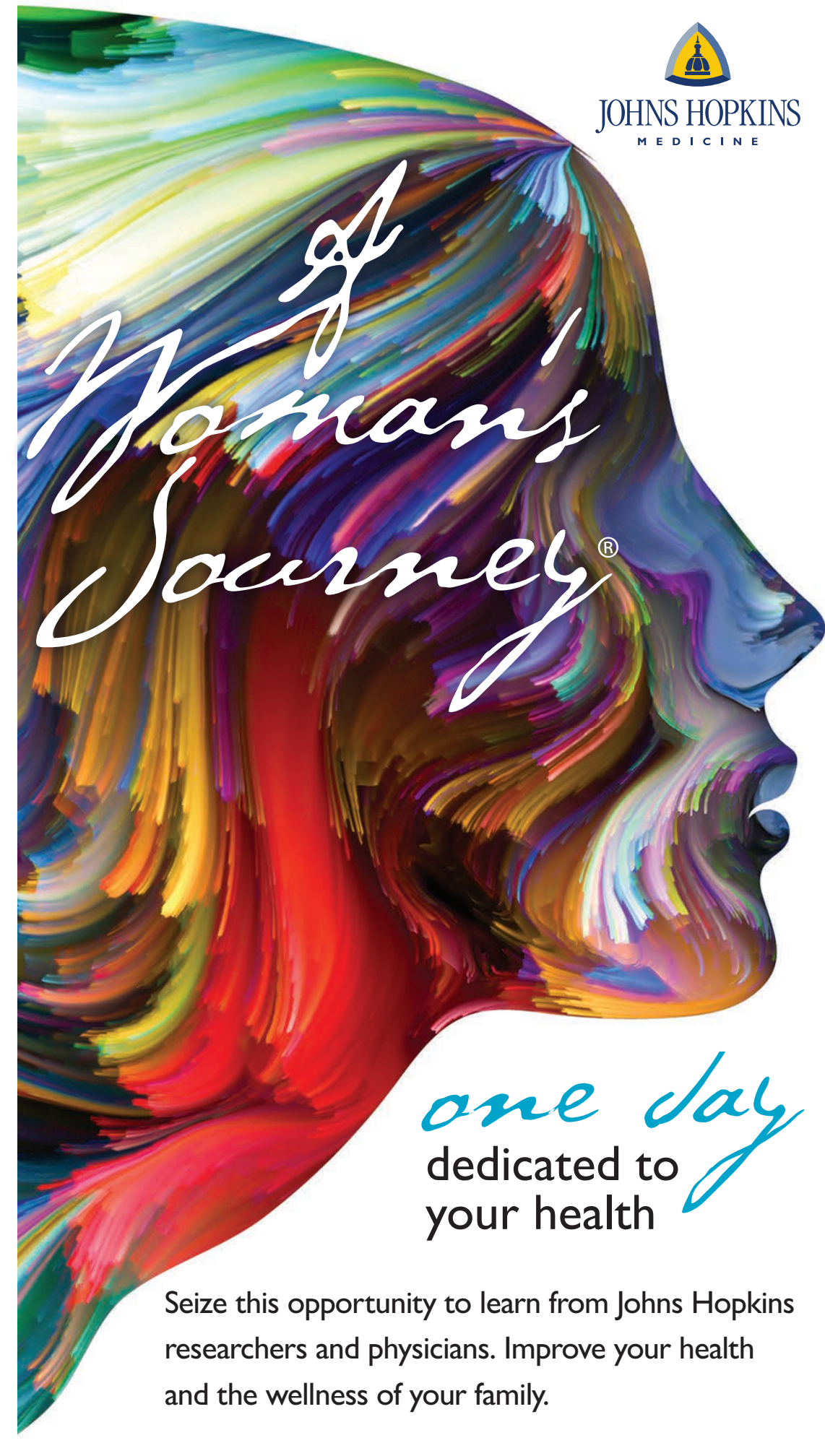
Beth Glassman
Beth Glassman

Gail Glick
Gail Glick

Laurie Singer
Laurie Singer

Co-Chairs

A Woman's Journey is grateful for the generous support of its corporate and media sponsors:



your personal invitation

one day
dedicated to
your health

Seize this opportunity to learn from Johns Hopkins researchers and physicians. Improve your health and the wellness of your family.

You're invited

JOHNS HOPKINS MEDICINE

A Woman's Journey[®]

Explore up-to-the minute health information
from Johns Hopkins physicians.

Friday, May 17, 2024

9–11:45 a.m.

Register now



Visit hopkinsmedicine.org/awomansjourney/gwa
or call 410-955-8660

The registration fee is \$60.

Registration is transferable, but not refundable.

For information about sponsorships,
premium reserved tables (eight guests @\$800),
and scholarships, please email Rebecca at
awomansjourney@jhmi.edu
or call 410-955-8660.

Program

WELCOME

Kelly Geer Ripken

National Chair, A Woman's Journey

Carolyn Carpenter

President

National Capital Region

Johns Hopkins Health System

INHALE

Lung cancer is increasing at alarming rates among younger adults and never-smokers. Learn about the dramatic advances that are leading to enhanced survivorship.

Benjamin Levy, M.D.

Associate Professor of Oncology

Clinical Director of Medical Oncology for the Johns Hopkins

Sidney Kimmel Cancer Center at Sibley

THE SURPRISING RISKS AND BENEFITS OF CAFFEINE

Caffeine comes in many forms. Recent research findings reveal facts about the properties of this chemical and when you should have had enough as well as its risks and benefits.

Dustin Lee, Ph.D.

Assistant Professor of Psychiatry and Behavioral Sciences

A PRIMER ON MENTAL HEALTH

Depression and mood disorders have soared since the pandemic. Learn about the hallmarks of mental illness and how to aid those who are suffering.

Karen Swartz, M.D.

Professor of Psychiatry and Behavioral Sciences

Myra S. Meyer Professor of Mood Disorders

Advisory Committee

Sherry Bellamy

Susan Cohn

Linda Courie

Dawn Doebler

Liz Flanagan

Molly Jackson

Diana Kogan

Amy Manela

Cindy Merz

Nina Mitchell

Barbara Mulitz

Belle O'Brien

Dushanti Peiris

Kiersten Peterson

Kristen Pruski

Sharon Rockefeller

Caroline Shafa

Maria Young

as of January 10, 2024

Johns Hopkins Medicine National Capital Region Leadership



**Carolyn Carpenter,
M.H.A., F.A.C.H.E.**

*President, National Capital
Region of
The Johns Hopkins
Health System*



**LeighAnn Sidone, D.N.P.,
R.N., C.E.N.P.**

*Interim President and
Chief Operating Officer
Suburban Hospital
Associate Chief Nurse
Executive for Practice
The Johns Hopkins
Health System*



**Hasan Zia, M.D., M.B.A.,
F.A.C.S.**

*President and Chief
Operating Officer
Sibley Memorial Hospital*