

# WOMEN IN GLOBAL HEALTH: EXPLORING NON-ACADEMIC CAREERS

"Leadership is Not Linear"



**Shereen Bhan, MBA**

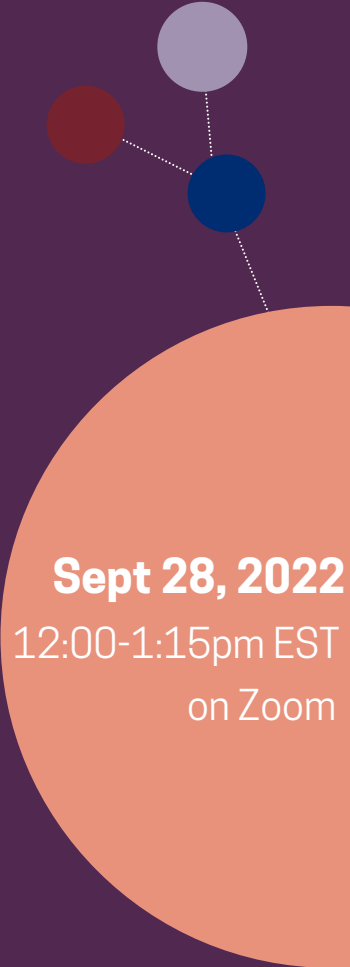
North America Region and Global  
Leadership Development Director  
WomenLift Health

**Sept 28, 2022**  
12:00-1:15pm EST  
on Zoom

# WOMEN IN GLOBAL HEALTH: EXPLORING NON-ACADEMIC CAREERS



**Shereen Bahn, MBA**  
North America Region and Global  
Leadership Development Director  
WomenLift Health



**Sept 28, 2022**  
12:00-1:15pm EST  
on Zoom

# WOMEN IN GLOBAL HEALTH: EXPLORING NON-ACADEMIC CAREERS

"How an Introvert Ended Up with a Career Mobilizing  
Collective Action in Digital Health & Other Tales"



**Patricia (Patty) Mechael, PhD MHS**  
Co-founder and Policy Lead,  
HealthEnabled

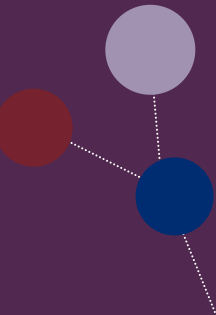
**Jan 26, 2022**  
12:00-1:15pm EST  
on Zoom

# WOMEN IN GLOBAL HEALTH: EXPLORING NON-ACADEMIC CAREERS

A Virtual Seminar Experience



**Grace Malera**  
Human Rights Protector  
Gender and Development  
Practitioner  
Lawyer  
Socio-Legal Researcher



**Nov 17, 2021**  
12:00-1:15pm EDT  
on Zoom



JOHNS HOPKINS  
BLOOMBERG SCHOOL  
of PUBLIC HEALTH

Population, Family and  
Reproductive Health



JOHNS HOPKINS  
CENTER for GLOBAL HEALTH

# WOMEN IN GLOBAL HEALTH: EXPLORING NON-ACADEMIC CAREERS

A Virtual Seminar Experience



**Nandini Oomman**

Global Health &  
Development Specialist and  
Founding Curator & CEO,  
The Women's Storytelling  
Salon

**April 20, 2022**

12:00-1:15pm EDT

on Zoom



JOHNS HOPKINS  
CENTER *for* GLOBAL HEALTH

# WOMEN IN

# GLOBAL EXCHANGE CAREERS

A Virtual

"Diversity"



2022  
Jan 11am EDT  
Zoom



JOHNS HOPKINS  
CENTER for GLOBAL HEALTH

# WOMEN IN GLOBAL HEALTH: EXPLORING NON-ACADEMIC CAREERS

**Hsien-Hsien Lei,  
PhD**

CEO, American  
Chamber of Commerce  
(AmCham)  
Singapore  
BSPH PhD '98



**May 25, 2022**

8:30-9:30am EDT  
on Zoom

**The American Chamber of Commerce (AmCham) in Singapore is the largest and most active international business association in Singapore and Southeast Asia. Dr. Lei has a PhD in Epidemiology from The Johns Hopkins University Bloomberg School of Health where she received the US National Institute of Health Cardiovascular Disease Epidemiology Training Grant.**



JOHNS HOPKINS  
CENTER *for* GLOBAL HEALTH

# WOMEN IN GLOBAL HEALTH: EXPLORING NON-ACADEMIC CAREERS



Before Dr. Hsien-Hsien Lei was CEO of AmCham, she was Vice President, Medical and Scientific Affairs, Medtronic Asia Pacific. In this role, she supervised the Medtronic Innovation Centers in Japan and Korea, training and education, and the company's health systems transformation strategy. In addition to her leadership experience, she has an expert in corporate communications, advertising and promotion, and government affairs.

**May 25, 2022**

8:30-9:30am EDT on Zoom



JOHNS HOPKINS  
CENTER *for* GLOBAL HEALTH



# WOMEN IN GLOBAL HEALTH: EXPLORING NON-ACADEMIC CAREERS

"LISTEN: What we learned from speaking to women leaders in healthcare"



**Monet Slinowsky, MSE**  
Director of Tech & Product, Rose Health  
Co-host, Winning Health Podcast



**Namratha Potharaj, MSE**  
Biodesign Fellow, Research Engineer  
Center for Bioengineering Innovation & Design, JHU  
Co-host, Winning Health Podcast

**OCT 13, 2021**

12:00-1:00pm EDT  
on Zoom



JOHNS HOPKINS  
CENTER *for* GLOBAL HEALTH

# WOMEN IN GLOBAL HEALTH: EXPLORING NON-ACADEMIC CAREERS



**"I am an advocate of  
public health... even  
though I spend my  
time in different  
ways I still am  
someone who wants  
to activate ideas"**

**Dr. Hsien-Hsien Lei**

**May 25, 2022**  
On our Youtube Channel!

# WOMEN IN GLOBAL HEALTH: EXPLORING NON-ACADEMIC CAREERS

A Virtual Seminar Experience



## Nandini Oomman

"Building my support system has been critical ... your family, colleagues, and mentors ... allow you to craft the path that you need to do for yourself"

**April 20, 2022**

12:00-1:15pm EDT

On our Youtube Channel!

# WOMEN IN GLOBAL HEALTH: EXPLORING NON-ACADEMIC CAREERS

"How an Introvert Ended Up with a Career  
Mobilizing Collective Action in Digital Health &  
Other Tales"



**Patricia (Patty)  
Michael, PhD MHS**  
Co-founder and  
Policy Lead,  
HealthEnabled

"Lean into your strengths and hire for your weaknesses: the time and energy spent to overcome your weaknesses will take away from what you can do and really where you can shine. Find the time to discover what really works for you - for me, it's to be prepared."